

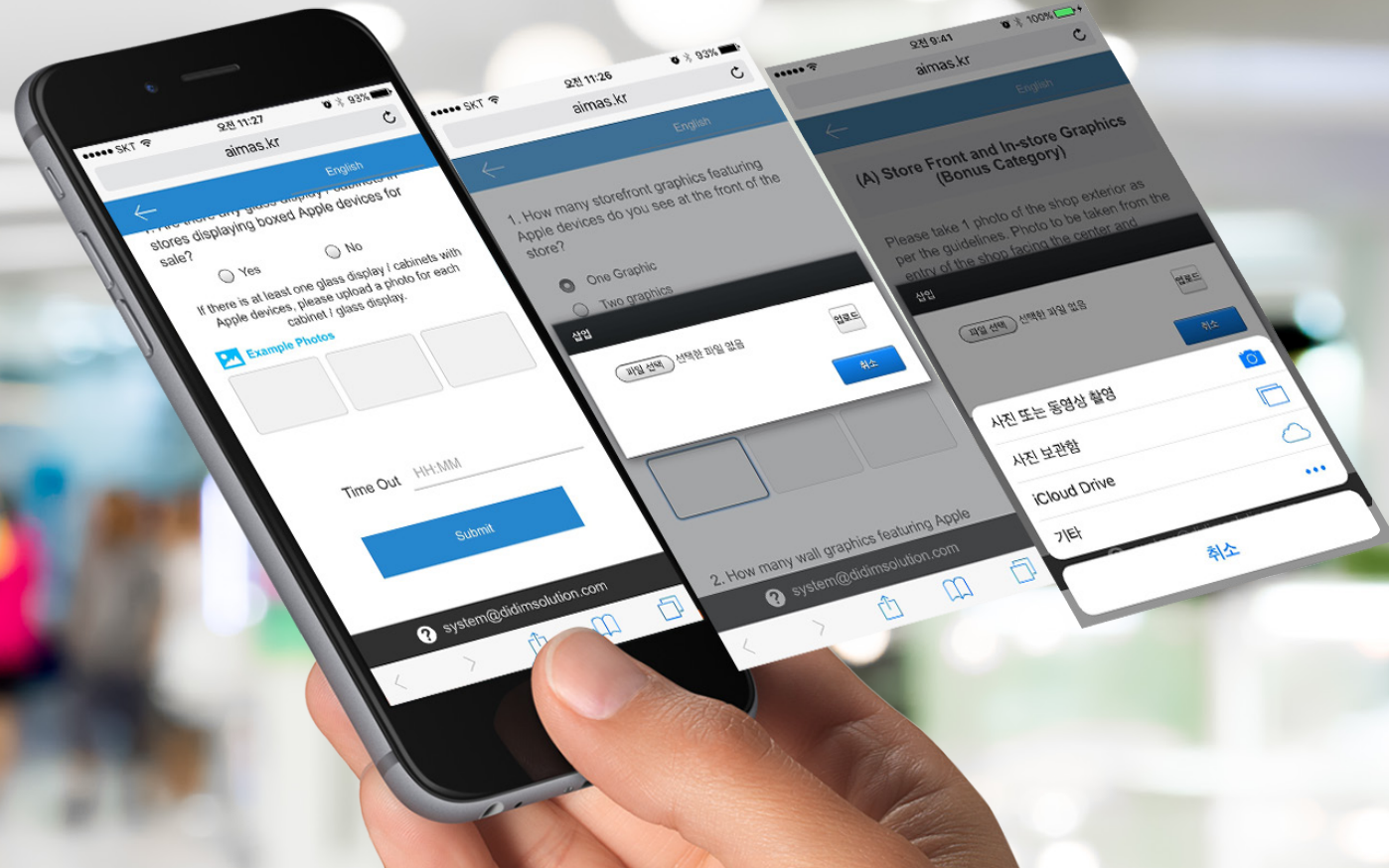
CAMS

Custom Audit Management System



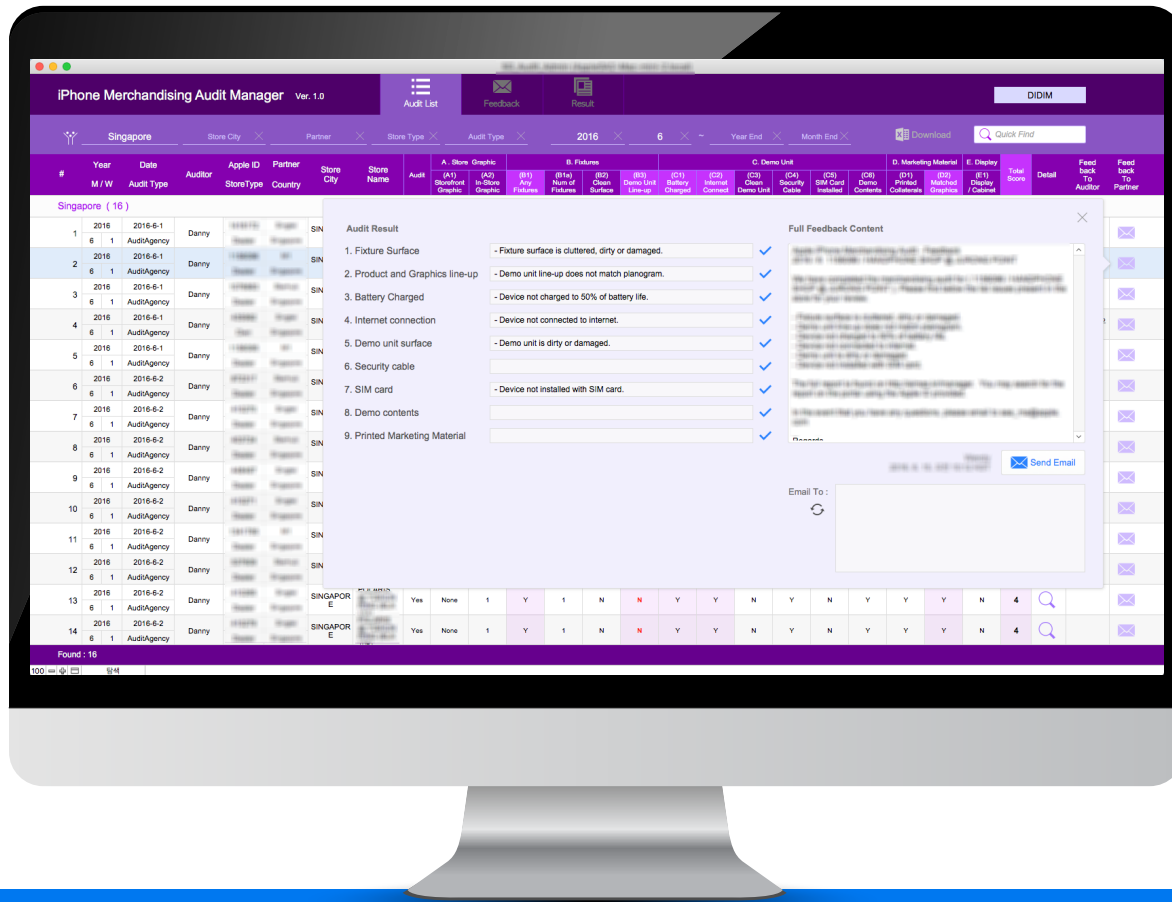
CAMS

Custom Audit Management System



- CAMS is a Audit Management System that allows to manage agency and store through the photographic material.
- Auditors are able to fill out the check list and take pictures and attach them right away with their mobile phone or tablet when they are auditing agency and store.

ABOUT CAMS



Real time

Administrators can check the status of auditing in real time.

Efficient

You are able to manage agencies and stores efficiently.

Easy

It is easy to send text messages or e-mail for follow-up.



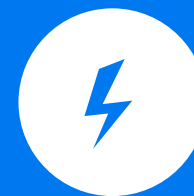
Real time



Efficient



Easy

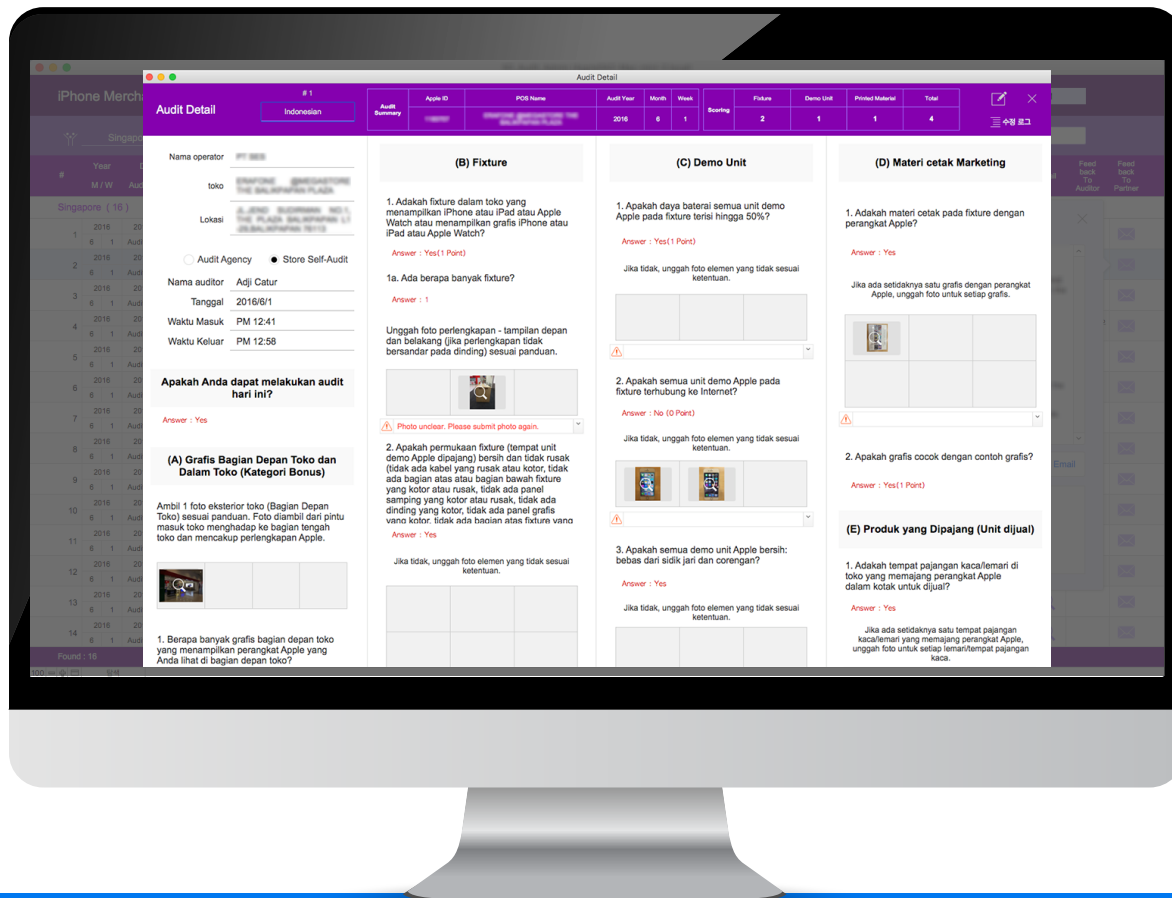


Quick



Custom

ABOUT CAMS



Quick

Auditing administrators can find the agency or evaluation form which they want quickly and see the details at a glance.

Custom

Evaluation items are custom prepared and can be created in various type.

1

Select a item from selections by Radio Button



2

Input texts in Edit box

text

3

Select a item from Drop-down list

List

4

Attach a picture, movie clip, PDF file and etc





- You can quickly determine the status of a agency or branch in the nation or countries through a custom Audit Management System.
- It makes work easier for both auditing administrator and auditor, and it enables auditing more stores within a short time when you introduce Audit Management System. This leads directly to cost savings.

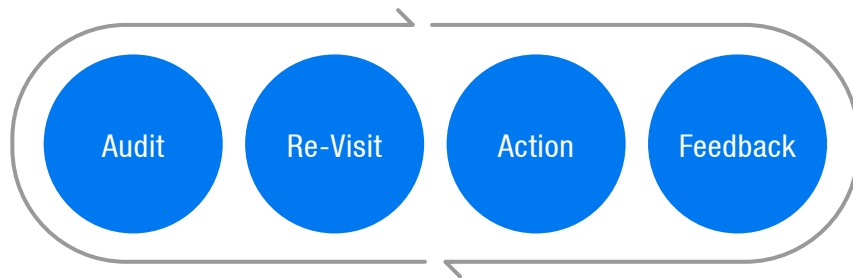
CAMS STRENGTH



- It makes easy to create various documents for administrators fits on their environment enabling export audit data as Excel, PDF, Text and etc.
- Evaluation data stored in the database is able to be utilized variously because it is possible to collect statistics by items or to draw a graph with it.



- It delivers contents more accurately which can not be expressed on the way of the statement on evaluation form by attaching pictures as evidential material.
- It will reduce the threat of such loss or damage that may occur from the way of managing traditional paper evaluation and the time taking place in the input process from paper evaluation form to the database.



Every process and contents from auditing to feedback and follow-up will be custom-made.



All data is transmitted through an encrypted network based on SSL.



- CAMS is developed base on FileMaker. FileMaker Server and FileMaker Pro License would be required base on user environment.
- FileMaker is a optimized platform for developing custom solutions with hundreds of millions of users worldwide using since its launch in 1985 more than 30 year.
- DIDIM Solution, an official partner of FileMaker Inc. in Korea is responsible for solution development and education.